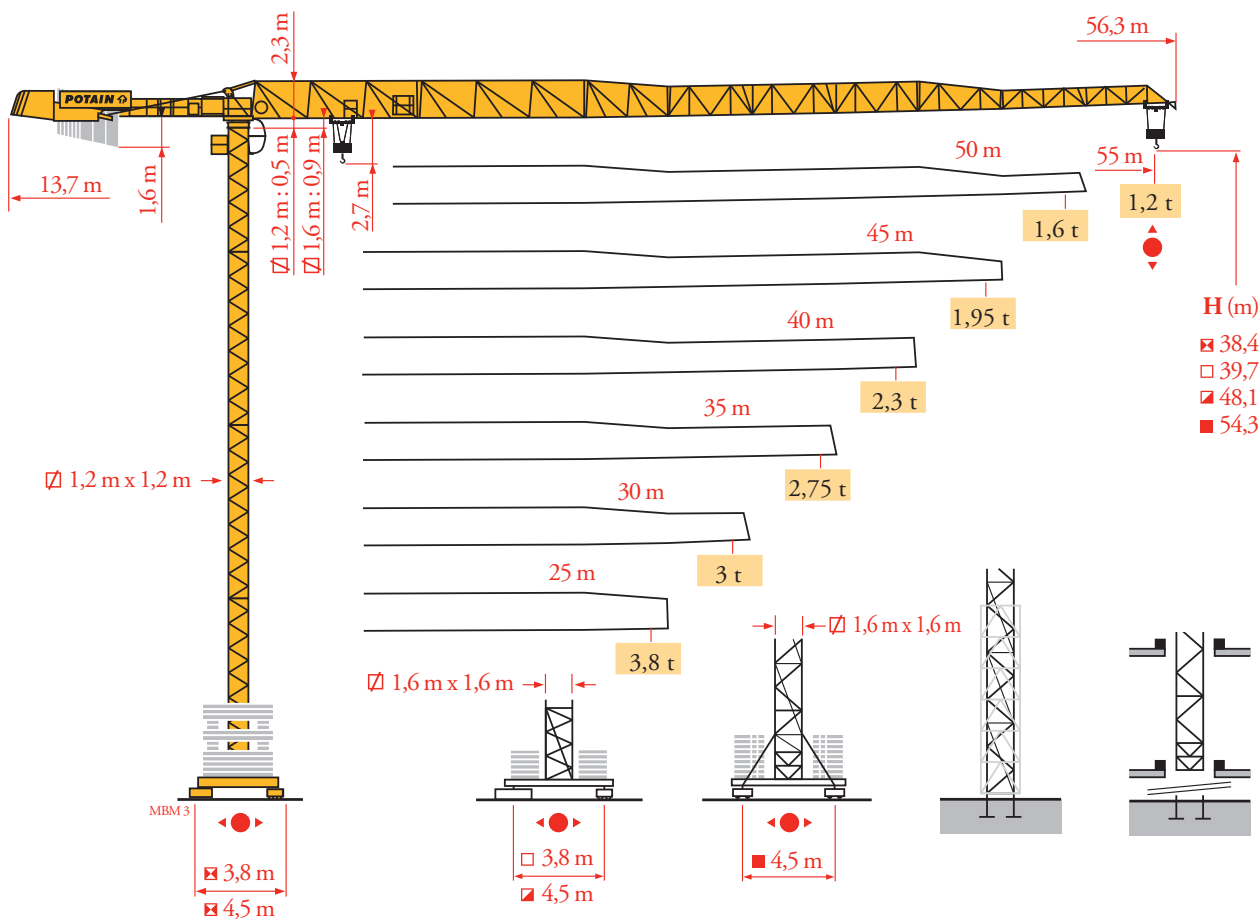




Grove Manitowoc National Crane Potain

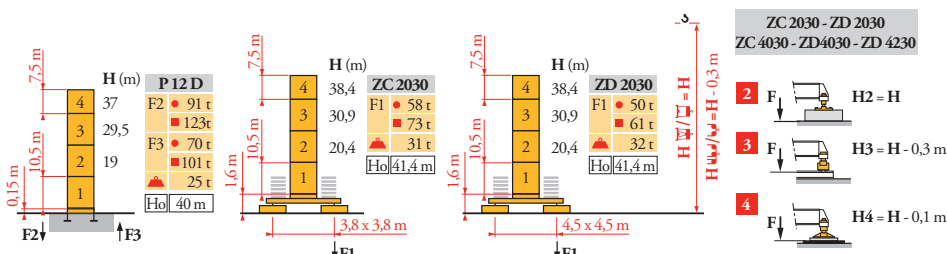


Potain MDT 98

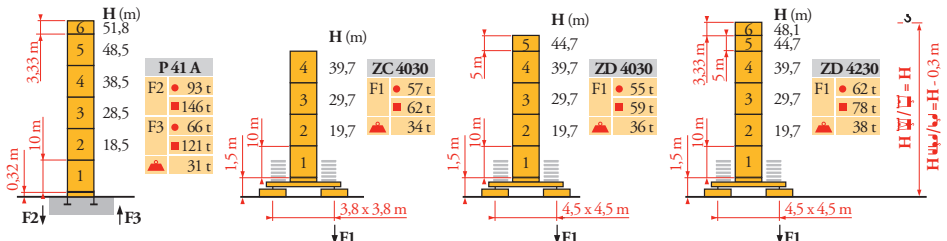




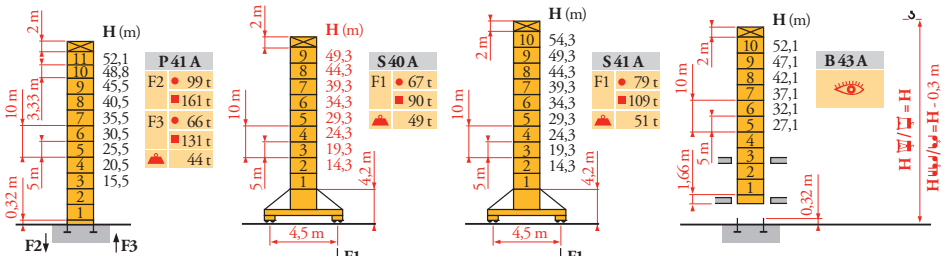
Mat / Réactions City 1,2 m
Maste / Eckdrücke
Masts / Reactions
Mástil / Reacciones
Torre / Reazioni
Tramo / Reacções
Композиции башни / Реакции



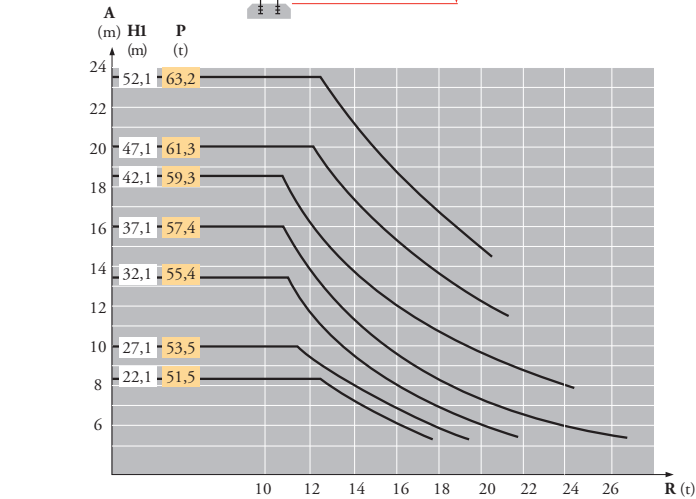
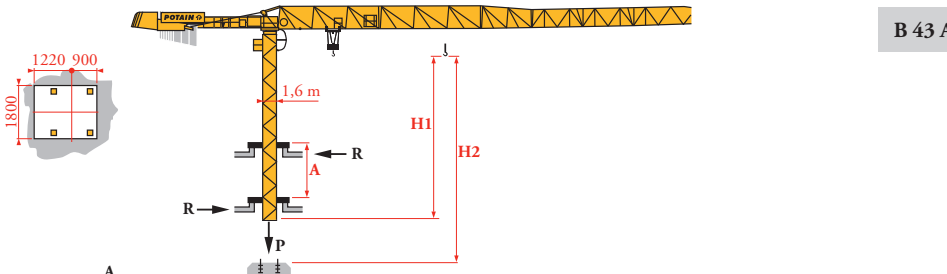
City 1,6m



Télescopable 1,6 m
Teleskopierbar 1,6 m
Telescopico 1,6 m
Telescopico 1,6 m
Telescopagem 1,6 m
Телескопируемый башня 1,6 м х 1,6 м



Télescopage sur dalles
Kletterkrane im Gebäude
Climbing crane
Telescopage gruas trepadoras
Gru in cavedio
Telescopagem sobre lages
Кран, ползущий внутри здания



FR	DE	EN	ES	IT	PT	RU
● Réactions en service	Reaktionskräfte in Betrieb	Reactions in service	Reacciones en servicio	Reazioni in servizio	Reacções em serviço	Реакции при работе
■ Réactions hors service	Reaktionskräfte außer Betrieb	Reactions out of service	Reacciones fuera de servicio	Reazioni fuori servizio	Reacções fora de serviço	Реакции в покое
▲ A vide sans lest (ni train de transport) avec flèche et hauteur maximum	Ohne Last, Ballast (und Transportachse), mit Maximalausleger und Maximalhöhe	Without load, ballast (or transport axes), with maximum jib and maximum height	Sin carga, sin lastre, (ni tren de transporte), flecha y altura máxima	A vuoto, senza zavorra (ne assali di trasporto) con braccio massimo e altezza massima	Sem carga (nem trem de transporte)- sem lastro com lança e altura máximas	Вес без груза, балласта (или транспортных осей), с максимальной длиной стрелы и максимальной высотой
Ho H sans cabine	H Ohne Fahrerhaus	H without cab	H sin cabina	H senza cabina	H sem cabine	Высота без кабины

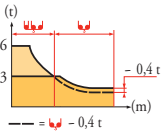


Courbes de charges
Lastkurven
Load diagrams
Curvas de cargas
Curve di carico
Curva de cargas
Диаграммы
грузоподъемностей

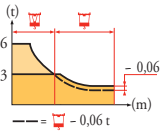
MBM 3



55 m	3,1 ▶	14,1	15	17	20	22	24,5	27	30	32	35	37	40	42	45	47	50	52	55 m																														
▲▼▲▼		6	5,6	4,8	3,9	3,5	3	3	2,65	2,45	2,2	2,05	1,85	1,75	1,6	1,5	1,35	1,3	1,2 t																														
50 m	3,1 ▶		15,8	17	20	22	25	27,4	30,2	32	35	37	40	42	45	47	50 m																																
▲▼▲▼		6	5,5	4,5	4	3,4	3	3	2,8	2,5	2,35	2,15	2	1,85	1,75	1,6	t																																
45 m	3,1 ▶		16,5	17	20	22	25	27	28,7	31,7	35	37	40	42	45 m																																		
▲▼▲▼		6	5,8	4,8	4,2	3,6	3,3	3	3	2,65	2,5	2,25	2,15	1,95	t																																		
40 m	3,1 ▶		16,7	17	20	22	25	27	29,1	32,1	35	37	40 m																																				
▲▼▲▼		6	5,9	4,8	4,3	3,7	3,3	3	3	2,7	2,55	2,3	t																																				
35 m	3,1 ▶			17	20	22	25	27	29,5	32,5	35 m																																						
▲▼▲▼			6	4,9	4,4	3,7	3,4	3	3	2,75	t																																						
30 m	3,1 ▶			17,2	20	22	25	27	30 m																																								
▲▼▲▼			6	5	4,5	3,8	3,4	3	t																																								
25 m	3,1 ▶			17,2	20	22	25 m																																										
▲▼▲▼			6	5	4,5	3,8	t																																										



55 m	3,1 ▶	14,3	17	20	22	25,3	25,7	27	30	32	35	37	40	42	45	47	50	52	55 m
▲▼▲▼		6	4,9	4	3,6	3	3	2,8	2,45	2,25	2	1,9	1,7	1,55	1,45	1,35	1,2	1,15	1,05 t
50 m	3,1 ▶	16	17	20	22	25	27	28,4	28,9	30	32	35	37	40	42	45	47	50 m	
▲▼▲▼		6	5,6	4,6	4,1	3,5	3,2	3	3	2,85	2,65	2,35	2,2	2	1,85	1,7	1,6	1,45 t	
45 m	3,1 ▶	16,8	17	20	22	25	27	29,8	30,3	32	35	37	40	42	45 m				
▲▼▲▼		6	5,9	4,9	4,4	3,7	3,4	3	3	2,8	2,5	2,35	2,1	2	1,8	t			
40 m	3,1 ▶	17	20	22	25	27	30,3	30,8	32	35	37	40 m							
▲▼▲▼		6	5	4,4	3,8	3,5	3	3	2,85	2,55	2,4	2,15	t						
35 m	3,1 ▶	17,3	20	22	25	27	30,7	31,2	35 m										
▲▼▲▼		6	5	4,5	3,9	3,5	3	3	2,6	t									
30 m	3,1 ▶	17,7	20	22	25	27	30 m												
▲▼▲▼		6	5,2	4,7	4	3,6	3,2	t											
25 m	3,1 ▶	17,7	20	22	25 m														
▲▼▲▼		6	5,2	4,7	4	t													















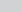
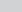

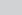
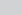

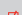


Lest de contre-flèche
Gegenauslegerballast
Counter-jib ballast
Lastre de contra flecha
Contrappeso
Lastros da contra lança
Балласт на консоли

MBM 3

	1 100 kg - 3 600 kg	
▲▼▲▼		▲ (kg)
55 m	13,7 m	17 400
50 m	13,7 m	16 300
45 m	13,7 m	15 200
40 m	13,7 m	14 100
35 m	13,7 m	13 000
30 m	13,7 m	11 900
25 m	13,7 m	10 800

Lest de base
Grundballast
Base ballast
Lastre de base
Zavorra di base
Lastros da base
Базовый балласт

MBM 4









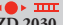


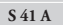


 1,2 m	ZC 2030 	H (m)	38,4	30,9	20,4							
		 (t)	75	50	50							
 1,2 m	ZD 2030 	H (m)	38,4	30,9	20,4							
		 (t)	60	35	35							
 1,6 m	ZC 4030 	H (m)	39,7	29,7	19,7	9,7						
		 (t)	70	65	60	55						
 1,6 m	ZD 4030 	H (m)	44,7	39,7	34,7	29,7	24,7	19,7	14,7	9,7		
		 (t)	70	70	60	60	45	45	45	45		
 1,6 m	ZD 4230 	H (m)	48,1	44,7	39,7	34,7	29,7	24,7	19,7	14,7	9,7	
		 (t)	80	70	60	45	45	45	45	45	45	
 1,6 m	S 40 A 	H (m)	49,3	44,3	39,3	34,3	29,3	24,3	19,3	14,3		
		 (t)	84	60	42	42	42	42	36	36		
 1,6 m	S 41 A 	H (m)	54,3	49,3	44,3	39,3	34,3	29,3	24,3	19,3	14,3	
		 (t)	114	84	60	42	42	42	42	36	36	

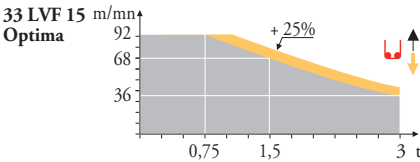
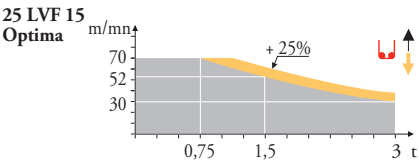
	FR	DE	EN	ES	IT	PT	RU
A	Distance entre cadres	Abstand zwischen den Rahmen	Distance between collars	Distancia entra marcos	Distanza fra i telai	Distância entre quadros	Расстояние между рамками крепления
H1	Hauteur grue	Kranhöhe	Crane height	Altura grúa	Altezza gru	Altura da grua	Высота крана
P	Poids de la grue(en service)	Krangewicht (in Betrieb)	Crane weight (in service)	Peso de la grúa (en servicio)	Peso della gru (in servizio)	Peso da grua (em serviço)	Вес крана (при работе)
R	Réaction horizontale	Horizontalkräfte	Horizontal reaction	Reaccion horizontal	Reazione orizzontale	Reacção horizontal	Горизонтальные реакции
	Voir télescopage sur dalles	Siehe Kletterkrane im Gebäude	See climbing crane	Vea grua trepadora	Consultare gru in cavedio	Ver telescopagem sobre lages	См. кран, ползущий внутри здания



Mécanismes
Antriebe
Mechanisms
Mecanismos
Meccanismi
Mecanismos
Механизмы

MBM 4

															ch - PS hp	kW		
	25 LVF 15 Optima	m/min	3,2 → 8,6 → 30 → 40 → 52 → 70							1,6 → 4,3 → 15 → 20 → 26 → 35						25	18	260 m
		t	3	3	3	2,25	1,5	0,75	6	6	6	4,5	3	1,5				
	33 LVF 15 Optima	m/min	3 → 12 → 36 → 48 → 68 → 92							1,5 → 6 → 18 → 24 → 34 → 46						30	22	260 m
		t	3	3	3	2,25	1,5	0,75	6	6	6	4,5	3	1,5				
	7 DVF 4	m/min	0 → 79												6,5	4,8		
	RVF 152 Optima +	tr/min U/min rpm	0 → 0,8												2 x 5,5	2 x 4		
	ZC 2030 ZC 4030	m/min	25												2 x 4	2 x 2,9		
	ZD 2030 ZD 4030 ZD 4230	m/min	12,5 - 25												2 x 7	2 x 5,2		
	S 40 A  R ≥ 10 m	m/min	12,5 - 25												2 x 7	2 x 5,2		
	S 41 A A1 2V R ≥ 10 m	m/min	15 - 30												4 x 5	4 x 3,7		
 IEC 60204-32														 kVA				
400 V(+10% -10%) 50 Hz / 480 V(+ 6% -10%) 60 Hz														25 LVF : 40 kVA 33 LVF : 50 kVA				



FR

Levage
Distribution
Orientation
Translation

DE

Heben
Katzfahren
Schwenken
Kranfahren

EN

Hoisting
Trolleying
Slewing
Travelling

ES

Elevación
Distribución
Orientación
Traslación

IT

Sollevamento
Distribuzione
Rotazione
Traslazione

PT

Elevação
Distribuição
Rotação
Translação

RU

Подъем
Перемещение каретки
Поворот
Перемещение крана



Document commercial
non contractuel. Pour
toute information
technique se référer à la
notice correspondante.

Unverbindliches
Vertriebsdokument. Für
technische Informationen,
siehe die entsprechenden
Anweisungen.

This commercial document
is not legally binding. For
any technical information,
please refer to the
corresponding instructions.

Documento commercial
no contractual. Para
cualquier información
técnica, ver la noticia
correspondiente.

Documento commerciale
non vincolante. per tutte
le informazioni tecniche
fare riferimento al
catalogo istruzioni.

Documento comercial não
contratual. Para qualquer
informação técnica
complementar consultar
as respectivas instruções.

Этот коммерческий документ
не является юридически
обязательным. Для получения
технической информации, см.
соответствующие инструкции.



Manitowoc - Americas - World Headquarters

2400 S. 44th Street • Manitowoc • WI 54220 USA
Tel: +1 920 684 4410 • Fax: +1 920 652 9778

Manitowoc - Europe, Middle East & Africa

Ecully, France
18, rue de Charbonnières B.P. 173 • 69132 ECULLY Cedex • FRANCE
Tel: +33 (0)4 72 18 20 20 • Fax: +33 (0)4 72 18 20 00

Manitowoc - Asia Pacific

16F Xu Hui Yuan Building,
1089 Zhongshan No.2 Road (S) • Shanghai 200030 China
Tel: +86 21 6457 0066 • Fax: +86 21 6457 4955

REF. 2004 42 MBM 8